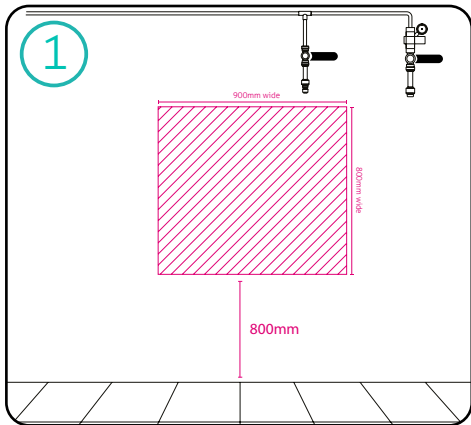
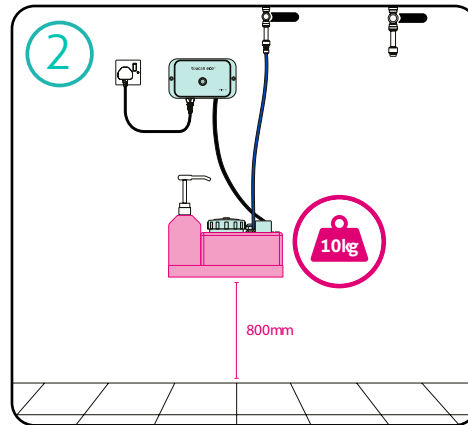


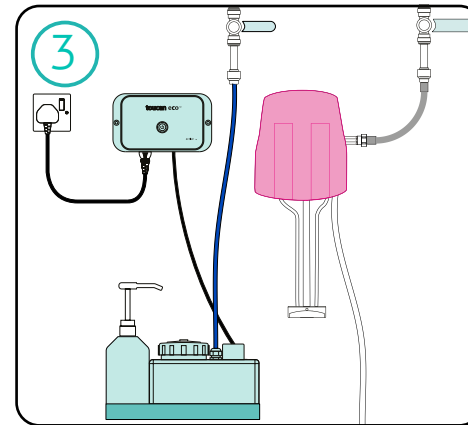
# Toucan Eco Active Plus install guide



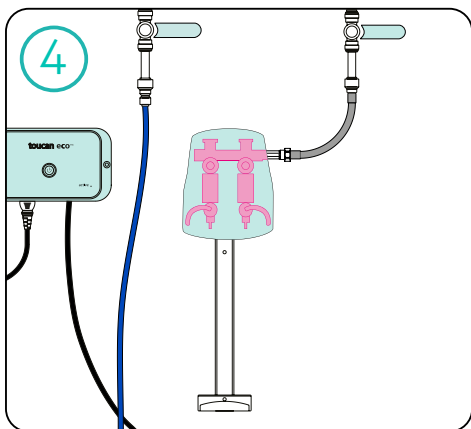
Choose a wall space of 900mmx800mm at 800mm above floor level, close to a water and electrical supply (water pressure between 2-4 bar), and install 15mm pipe, 2 lever valves and a pressure reducing valve.



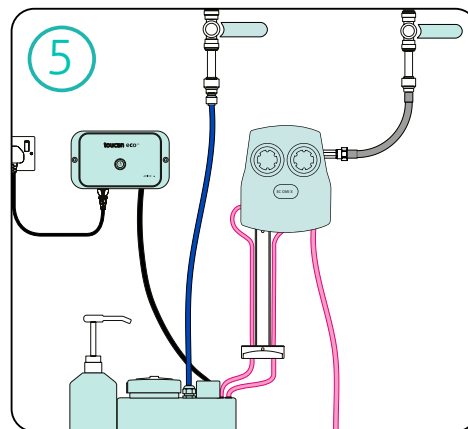
Fix the shelf to the wall 800mm above the floor, making sure it can take 10kg, place the 5L tank and brine container on the shelf and fix the control box to the wall. Connect the blue tube from the tank to the 15mm pipe.



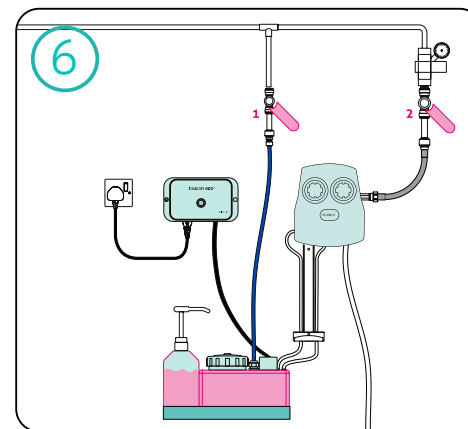
Remove the dispenser mechanisms and fix the enclosure back and spray bottle stand to the wall. Refer to the Compact 2 Ecomix instructions provided for further details.



Replace the dispenser mechanism. Attach the silver pipe from the mains to the dispenser.



Connect the clear tubes from the 5L tank to each dispenser. Replace the dispenser enclosure fronts.



Turn lever 2 to the on position. Add salt to the brine dispenser to a depth of 5cm and top up with water. Fill the 5L tank with water using lever 1.

## Components



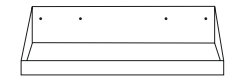
5L holding tank and control box



2.5L brine container and dispenser



Control box power lead



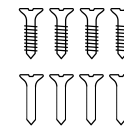
Stainless steel shelf



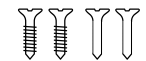
2x 15mm to 10mm reducer



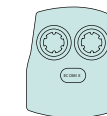
10mm blue feeder pipe



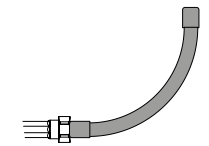
4x shelf screws and wall plugs



2x control box screw and wall plugs



Ecomix Compact 2 dilution dispensers



Silver pipe