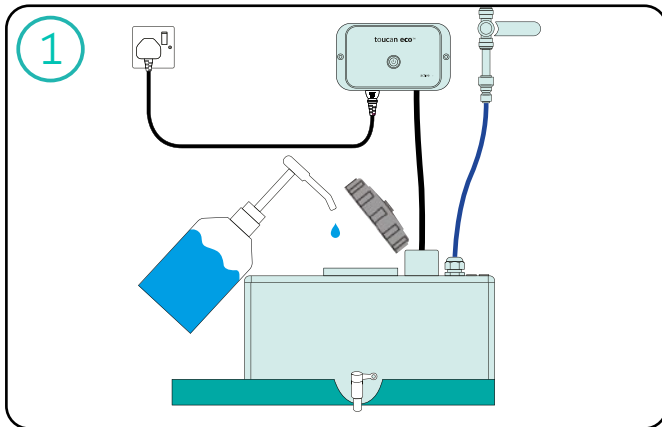
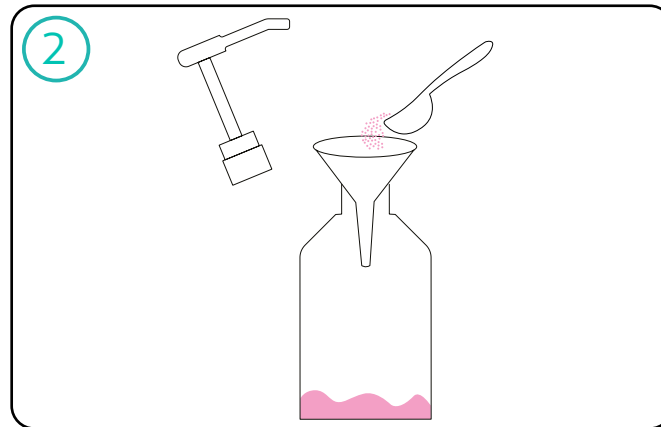


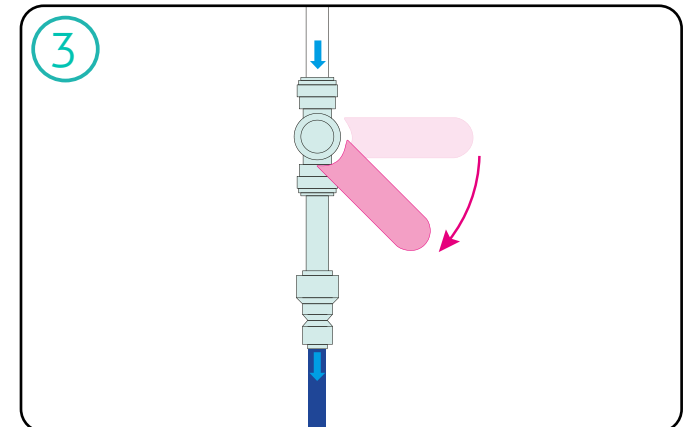
# Toucan Eco Active operation guide



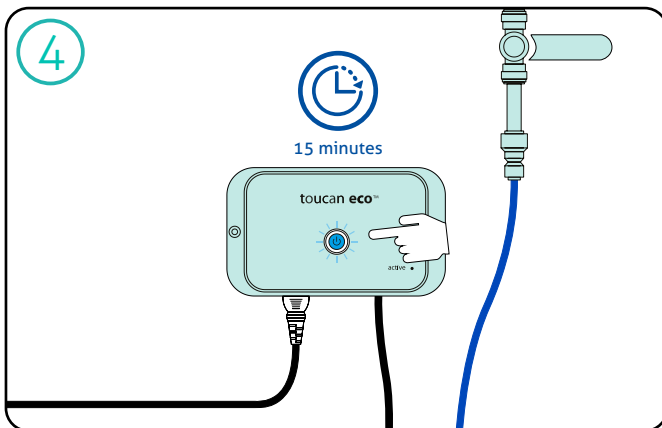
1 Undo the tank's black lid and add one pump (30ml) of the brine solution. Do not add more as this may prevent the device from activating.



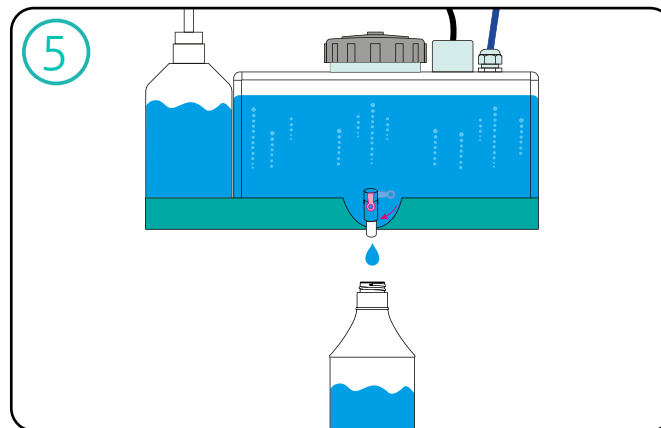
2 If the salt in the brine bottle has dissolved or the water level is low simply add more salt or water. As long as you can see the salt in the bottom of the water this means it's super saturated and the correct measure is used.



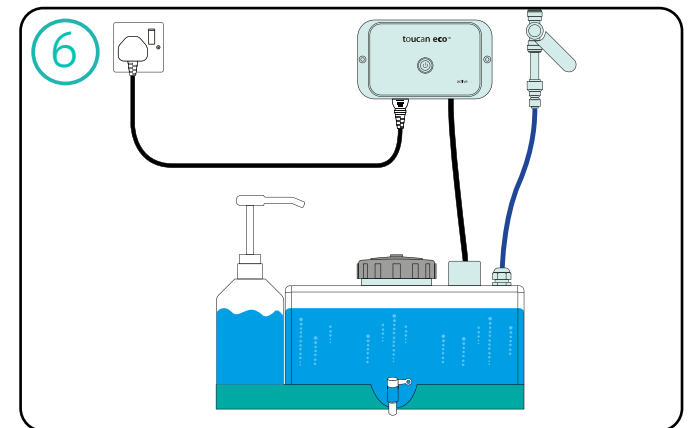
3 Open the lever valve to fill the tank up to the 10 litre mark. If the unit isn't plumbed in simply fill by hand.



4 Switch on the activator unit - the unit's light will turn green. Press the button, the light turns blue and the electrochemical activation begins. This will take 15 minutes.



5 When ready the light turns green. Use the tap to dispense the solution into bottles or buckets.



6 To make more solution simply repeat this process again.